

REF.:5224

Andorra | Sotheby's
INTERNATIONAL REALTY

Building land to buy in Arinsal

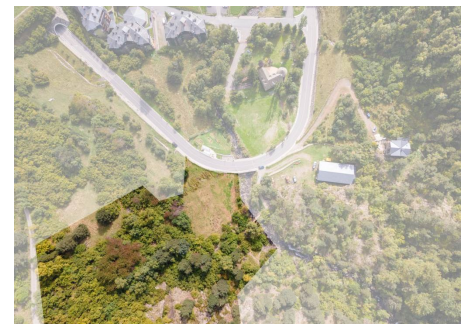
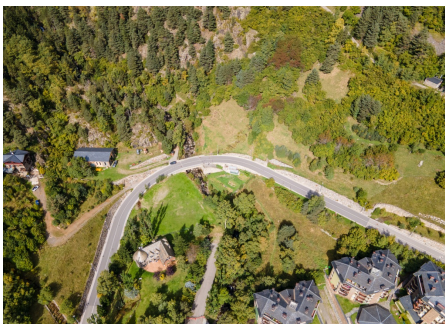
Andorra - Arinsal

Superficie	Habitaciones	Baños	Precio
8247 m ²	0	0	2.631.000 €

Contáctenos para recibir más información o solicitar una visita

 +376 872 222

 info@sir.ad



REF.:5224

Building land to buy in Arinsal

Andorra - Arinsal

Superficie	Habitaciones	Baños	Precio
8247 m²	0	0	2.631.000 €

Contáctenos para recibir más
información o solicitar una visita

 +376 872 222

 info@sir.ad

Ideal plot to buy in the ski area of Arinsal in the quiet area of Prats Subirans, located on the descending slope between the slopes, the town of Arinsal, and the beginning of the hiking section to Comapedrosa in a strategic enclave with a lot of tourist activity . This plot has 8,247 m² with authorized uses of single-family residences, multi-family residences, and hotels. It currently has all the necessary services of water, electricity, drains and communication lines. From the plot you can see spectacular panoramic views of the valley, and thanks to its orientation you can enjoy the sun all day.

Características

 Vistes a la muntanya

 Zona verda

 Assolellat

REF.:5224

Andorra | Sotheby's
INTERNATIONAL REALTY

Building land to buy in Arinsal

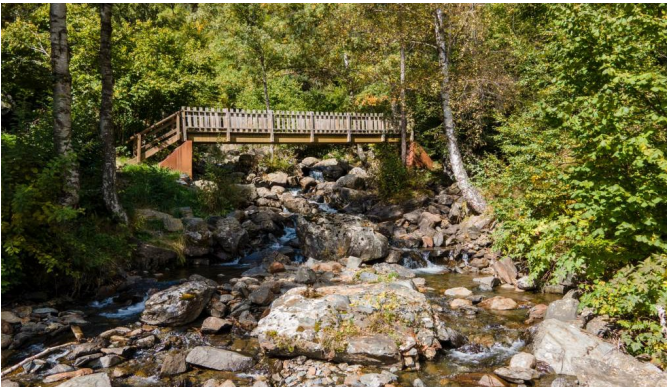
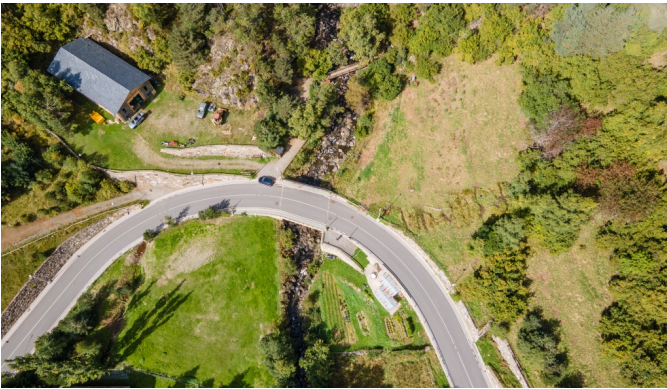
Andorra - Arinsal

Superficie	Habitaciones	Baños	Precio
8247 m ²	0	0	2.631.000 €

Contáctenos para recibir más información o solicitar una visita

 +376 872 222

 info@sir.ad



Sotheby's International Realty® is a registered trademark licensed to Sotheby's International Realty Affiliates LLC. Each Sotheby's International Realty® office is independently owned and operated.

Andorra Sotheby's International Realty
Calle Santa Anna, 14 AD700 Escaldes-Engordany Principado de Andorra
Tel: +376 872 222 · Email: info@sir.ad

www.andorra-sothebysrealty.com