

REF.:5349

Andorra | Sotheby's
INTERNATIONAL REALTY

Detached chalet to buy in Pal

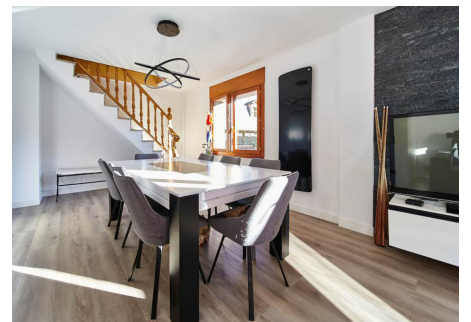
Andorra - Pal

| | | | |
|--------------------|--------------|-------|-------------|
| Superficie | Habitaciones | Baños | Precio |
| 240 m ² | 4 | 2 | 1.299.000 € |

Contáctenos para recibir más información o solicitar una visita

 +376 872 222

 info@sir.ad



REF.:5349

Detached chalet to buy in Pal

Andorra - Pal

| | | | |
|--------------------------|--------------|----------|--------------------|
| Superficie | Habitaciones | Baños | Precio |
| 240 m² | 4 | 2 | 1.299.000 € |

Contáctenos para recibir más información o solicitar una visita

 +376 872 222

 info@sir.ad

This charming mountain chalet for sale of about 240 m2 built with its large plot of 516 m2, is perfectly located in the historic village of Pal (La Massana), with its famous Romanesque church of the eleventh century, Sant Climent de Pal, and within a five minutes drive to the Vallnord Pal-Arinsal ski slopes, which can be seen from the property. The chalet is divided into 3 floors, which have kept their typical mountain style by adding the necessary equipment for the most exclusive modern comfort. The house is accessed from the ground floor, where we find a long entrance hall with fitted wardrobes to store clothes and shoes, giving way to the staircase that leads to the first floor where there is a bright living room, surrounded by windows, with wood burning fireplace, dining area, and exit to the large terrace overlooking the garden. The kitchen is fully equipped with many rustic style wooden cabinets and drawers. On the same floor there is a full bathroom with shower and a laundry room with space for various facilities. On the second floor, we find the rest area with three double bedrooms and one single, three of them with fitted wardrobes. The bedrooms have wonderful views of the garden and the surrounding mountains from Pal. We also have a bathroom with bathtub on this floor. All the shutters in the house are electric, the finishes are of good quality, ceramic floors throughout the first floor, and tiled floors on the top floor. In the large garden that surrounds most of the house, there is also a porch area with outdoor barbecue. The closed garage has two or three parking spaces as well as space to store several others. The garage door and the exterior fence door are fully automatic. Very sunny, well connected, quiet and with a natural charm, the property also has great potential thanks to its location.

Características

REF.:5349

Andorra | Sotheby's
INTERNATIONAL REALTY

Detached chalet to buy in Pal

Andorra - Pal

| | | | |
|--------------------|--------------|-------|-------------|
| Superficie | Habitaciones | Baños | Precio |
| 240 m ² | 4 | 2 | 1.299.000 € |

Contáctenos para recibir más información o solicitar una visita

+376 872 222

info@sir.ad



Sotheby's International Realty® is a registered trademark licensed to Sotheby's International Realty Affiliates LLC. Each Sotheby's International Realty® office is independently owned and operated.

Andorra Sotheby's International Realty
Calle Santa Anna, 14 AD700 Escaldes-Engordany Principado de Andorra
Tel: +376 872 222 · Email: info@sir.ad

www.andorra-sothebysrealty.com